



**Steady-selling
3 inch Thermal
POS Printer**

SRP-350II



BIXOLON SRP-350II is a 3 inch thermal POS printer to provide all you need. It supports a printing speed of 200mm/sec. Smart Windows driver and other various drivers make the SRP-350II even more attractive and special. The SRP-350II offers simplicity for operator with Easy-paper-loading and ease of USB 2.0 connectivity with interchangeable interfaces and industry standard drivers.

HIGHLIGHTS

- Fast printing speed up to 200mm per second
- Easy drop in paper loading
 - Simple paper jam removal
- Various interface cards (Serial / Parallel / USB, Ethernet, Powered USB)
- USB 2.0 Support
- 2D barcode printing
 - PDF417
 - QR Code
- Value-added options available
 - Melodist with 15 different melodies
 - SMPS cover for built-in power supply
 - Vertical stand for front exit face up
 - Wall mount bracket for limited space
- PSP (POS Software Package) Launcher Available
 - Intelligent Interface Auto-installer
 - Reverse Printing (Rotation)
 - Margin Crop
 - Text & Image Macro
- User-friendly software tools
 - Virtual Memory Switch Manager (VMSM)
 - NV image download
 - Full version of drivers supported
 - Windows Driver, OPOS Driver, JPOS Driver, Linux Cups Driver, Mac Driver

PRODUCT FEATURES

Image printing speed up to 200mm/sec

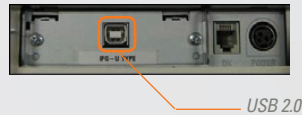
To save your precious time, the SRP-350II improves its text printing speed and image speed. Its printing speed is 25% quicker than the previous POS printer, SRP-350. For market's trends and needs, the SRP-350II is the proper and cost effective item.

Confidence in its Reliability, SRP-350II

Enjoy better Reliability with the SRP-350II. 70 million lines printer unit and 1.5 million lines auto-cutter available.

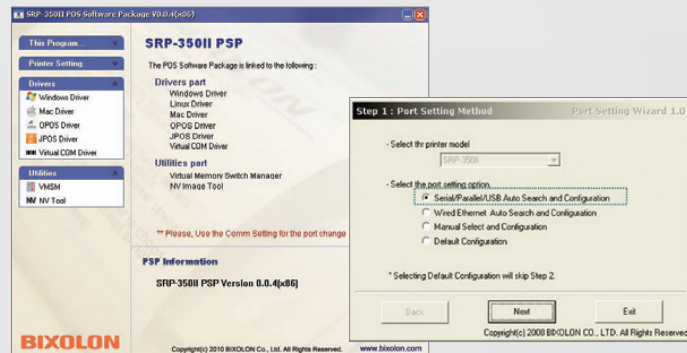
High-speed USB 2.0 Support

The SRP-350II uses USB 2.0 with a High Speed of 480Mbps. Choose Serial/Parallel/Ethernet/USB Interface card for your business convenience.



PSP(POS Software Package) Launcher Available

POS Software Package has many valuable and convenient functions. Intelligent Interface Auto-installer, Reverse Printing(Rotation), Barcode Setting, Margin Crop (Paper saving function), Text & Image Macro, NV Image management all available.



Mac Driver (Mac OS X V10.4, 10.5, 10.6) Support!

Smart windows driver, OPOS driver, JPOS driver, Linux CUPS driver and Mac driver.

SPECIFICATIONS

PRINT

- PRINTING METHOD : Direct thermal
- PRINTING SPEED : 200mm/sec
- RESOLUTION : Standard : 180dpi(7dot/mm)
- CHARACTER SIZE : Font A : 12 x 24 / Font B : 9 x 17 / Font C : 9 x 24
Korean : 24 x 24 / Chinese : 24 x 24
- CHARACTERS PER LINE :
Font A : 42 / Font B : 56 / Font C : 56, Korean : 21 / Chinese : 21
- CHARACTER SET : Alphanumeric Character : 95
Extended Character : 128 x 37 pages
International Character : 32
- BARCODES :
1D : EAN-13, EAN-8, Code 39, Code 93, Code 128, ITF,
Coda Bar, UPC-A, UPC-E
2D : PDF417, QR Code

PAPER

- WIDTH : 80mm
- PAPER ROLL DIAMETER : Max Ø 83mm
- PAPER LOADING : Easy Paper Loading

RELIABILITY

- PRINTER UNIT : 70 million lines
- TPH : 150 Km
- AUTO CUTTER : 1.8 million cuts

INTERFACE : Serial(RS-232C) / Parallel (IEEE 1284) /
USB 2.0 / Ethernet

RECEIVE BUFFER : 4 Kbytes

NV IMAGE MEMORY : 256 Kbytes(Mono) / 128Kbytes(Color)

USER DEFINE BUFFER : 12 Kbytes

EMULATION : BXL / POS

DRIVER : Windows,OPOS,JPOS,Linux CUPS(Linux kernel
2.4.18 and later), Mac Driver

SENSOR : Paper Near End Sensor, Paper End Sensor,
Cover Open Sensor

DRAWER PORT : 2 ports

POWER SUPPLY (SMPS) : AC 100-240V / DC 24V, 2.5A

DIMENSIONS : 145 x 203 x 146 (W x L x H mm)

OPERATING TEMPERATURE : 0 ~ 45°C

OPTION

- SMPS BUILT-IN COVER (RSB-350)
- WALL MOUNT (RWM-350)
- BIXOLON MELODIST (RMB-100)
- VERTICAL STAND (RVS-350)

BIXOLON®

BR-SRP-350II-EN-JUL11-V1

Copyright © BIXOLON Co., Ltd. All rights reserved. Features and specifications are subject to change without prior notice.

www.bixolon.com



BIXOLON Co., Ltd.

7-8th FL, Miraeasset Venture Tower, 685, Sampyeong-dong,
Bundang-gu, Seongnam-si, Gyeonggi-do, 463-400, KOREA (ROK)

Tel +82 (0) 31 218 5500

Fax +82 (0) 31 218 5589

E-mail sales@bixolon.com

BIXOLON America Inc.

3171 Fujita St Torrance,
CA 90505, USA

Tel +1 858 764 4580

Fax +1 310 257 6869

E-mail sales@bixolonusa.com

BIXOLON Europe GmbH

Tiefenbroicher Weg 35,
40472 Düsseldorf, Germany

Tel +49 211 68 78 54 0

Fax +49 211 68 78 54 20

E-mail sales@bixolon.de